

*The Essential
Niel Gow*



*A collection of tunes composed by
Niel Gow of Inver
1727-1807*

The Essential Niel Gow
A Collection of tunes composed by
Niel Gow of Inver
1727 - 1807

Compiled by
Roy Campbell

WINDFALL MUSIC

ALL RIGHTS RESERVED
No part of this publication may be
Reproduced without the permission
of the publisher in writing.

© Copyright 2008 Windfall Music
info@windfallmusic.com
www.windfallmusic.com



Niel Gow

Niel Gow was born on the 22nd of March 1727 and lived in the village of Inver near Dunkeld in Perthshire until his passing in 1807. During that time he made his mark in a long and successful career as a fiddler and composer of Scottish dance music.

His parents, John Gow and Catherine McEwan were plaid weavers and Niel would have been expected to follow this trade but for his considerable skill on the fiddle. It is thought that he taught himself to play on a kit from the age of nine, his one and only teacher, a few lessons at the age of thirteen, being John Cameron who was in the employ of Sir George Stewart as a retainer. Niel though, also lived within a community steeped in musical tradition and would surely have had any number of willing teachers to call upon.

By the time Niel was 18 he outshone all others by winning an all Scottish competition. That he was well known at this time was also evident in that the judge of the competition, who was blind, was able to say that he could tell the stroke of Niel's bow from among a hundred players.

He began to enjoy the patronage of the Atholl family, even earning a retainer of £5 per annum from the third Duke of Atholl. Niel also travelled down to London providing entertainment for the Duke's family the Murray's whilst the Parliament was in session and the Duke attended, becoming just as popular there as he was at home. He was very much in demand and travelled all over Scotland to play at Balls and other social events, being able to ask for fees well in excess of any other musicians of the time.

Niel's style as a fiddler was very distinctive. He is credited with the invention of – or at least the passing on – of the up-driven bow technique. This bowing uses a strong down bow followed by three notes played on the up bow with the second note being accented by increased travel and pressure, the last note being played staccato. Niel was also noted for giving a sudden shout during a quick dance tune which had the effect of electrifying the dancers.

Niel Gow's first wife Margaret Wiseman bore him five sons and three daughters. Of his sons who followed him into music his fourth son Nathaniel was the most famous and we can credit him with ensuring that the Gow name is still held in such high esteem. Nathaniel, though an equally famous composer and player in his own right, became a publisher of music and for some forty three years between 1784 and 1827 ensured that the family's own music was set down in print. Along with hundreds of other traditional and contemporary tunes, the Gow's compositions went to press saving them from slipping into obscurity. Due to those publications, some ninety of Niel Gow's tunes are known today along with those compositions of his sons William, the eldest, Andrew, John and Nathaniel along with Nathiel's own son Niel Gow Junior.

‘A Collection of Strathspey Reels’ compiled by Niel Gow at Dunkeld was published in 1784. Controversially most of the tunes in this collection are not credited to any particular composer and are a mix of traditional tunes, those written by Niel Gow and his sons and other contemporary fiddlers such as Marshall, Dow and others.

This led to the Gow’s being wrongly criticised as having claimed authorship of all the tunes in the collection and indeed, only Niel Gow, Sir Alexander Don and William Nisbet are credited in that first collection. Niel Gow could not possibly have been attempting to pass all these tunes off as his own however, as they were very well known and popular tunes of the day as well as many having been published previously. Even now though, some traditional tunes are mistakenly ascribed to Niel Gow as the composer when they were in fact traditional, the ‘Stool of Repentance’ being one such example.

The omission of Niel Gow’s name beside his own compositions was just as damaging to the Gow’s as it was the Gow name and reputation which attracted people to purchase the collections. Later editions started to include credit for authorship.

In total, Niel may be credited with 1 Quickstep, 2 Hornpipes, 4 Marches, 8 Jigs, 20 Reels and 53 Strathspeys. Of his Strathspeys only 20 are played at a dancing tempo with others played at much slower speeds. Well over half of Niel’s own compositions are to be played slowly as these were not just dance tunes but tunes to simply be listened to for their own sake.

Niel himself is credited with being a man of exceptional humour, honest and forthright he was unconcerned about the distinctions of rank or wealth and Robert Burns who met Niel in 1787 described him as having “...an interesting face, marking strong sense, kind open-heartedness, mixed with unmistrusting simplicity.” His portrait, painted that same year by Henry Raeburn shows Niel in tartan trews, seated with his fiddle. This now hangs in the National Portrait Gallery and was commissioned by the nobility and gentlemen of the Perth Assembly as Niel was, they thought, looking rather unwell and they wanted a permanent record of him – just in case. Happily he lived for a further twenty years. This painting is also thought to be the earliest recorded example of tartan.

Niel was certainly no stranger to grief or sorrow. He outlived his first wife, three of his sons and two of his daughters, his brother Donald, his second wife Margaret Urquhart and many good friends. This is all reflected in Niel’s Lament for his second wife written only two years before his own passing. Perhaps the most famous and well known of his compositions it is immensely sad but reflects a lightness of spirit as if it were his last dance with no regrets and much happiness.

His immense spirit and character still shine out from his work and presented here is the most complete collection of his compositions ever brought to the public.

Abercairney House. a Strathspey.

A musical score for 'Abercairney House, a Strathspey'. It consists of three staves of music in a single system. The key signature has two flats (B-flat and E-flat), and the time signature is common time (C). The music is written in a treble clef and features a complex, rhythmic melody with many sixteenth and thirty-second notes.

Cheap Mutton. a Strathspey.

Slowish

A musical score for 'Cheap Mutton, a Strathspey'. It consists of three staves of music in a single system. The key signature has two flats (B-flat and E-flat), and the time signature is common time (C). The music is written in a treble clef and features a melody with many sixteenth notes and some trills.

Col: Robertson of Stewan's Welcome home.

Slow

A musical score for 'Col: Robertson of Stewan's Welcome home'. It consists of six staves of music in a single system. The key signature has one sharp (F#), and the time signature is 6/8. The music is written in a treble clef and features a melody with many eighth notes and some trills. The trills are marked with 'tr'.

Colonel David Stewart of Garth's Reel.

Musical score for Colonel David Stewart of Garth's Reel, consisting of four staves of music in treble clef, 2/4 time, and D major. The melody is characterized by eighth-note patterns and includes several trills (tr) in the third and fourth staves.

Col: Robertson's Strathspey.

Slowly

Musical score for Col: Robertson's Strathspey, consisting of three staves of music in treble clef, 2/4 time, and D major. The tempo is marked 'Slowly'. The score features a complex melody with many trills (tr) and slurs throughout.

Countess of Hadinton's Strathspey.

Slowish

Musical score for Countess of Hadinton's Strathspey, consisting of three staves of music in treble clef, 2/4 time, and B-flat major. The tempo is marked 'Slowish'. The score features a complex melody with many trills (tr) and slurs throughout.

Dunkeld Bridge. a Reel.

Musical score for 'Dunkeld Bridge. a Reel.' consisting of three staves. The key signature has one flat (B-flat) and the time signature is common time (C). The melody is written on the top staff, and the accompaniment is on the two lower staves. Trills (tr) are marked above several notes in the melody.

This is the last Tune Composed by Niel Gow.

Dunkeld Hermitage. a Reel.

Musical score for 'Dunkeld Hermitage. a Reel.' consisting of three staves. The key signature has two sharps (F# and C#) and the time signature is common time (C). The melody is written on the top staff, and the accompaniment is on the two lower staves. Trills (tr) are marked above several notes in the melody.

Dunkeld House. a Jig.

Slowly

Musical score for 'Dunkeld House. a Jig.' consisting of six staves. The key signature has two sharps (F# and C#) and the time signature is 6/8. The melody is written on the top staff, and the accompaniment is on the five lower staves. Slurs are used to indicate phrasing in the melody.

Dunkeld Steeple. a Hornpipe.

Earl of Breadalbane's Hermitage. a Reel.

Earl of Dalhousie's March.

Slow

Farewell to Whisky.

Very slow & pathetick.



This Tune alludes to prohibiting the making of Whisky in 1799. It is expressive of a Highlander's sorrow



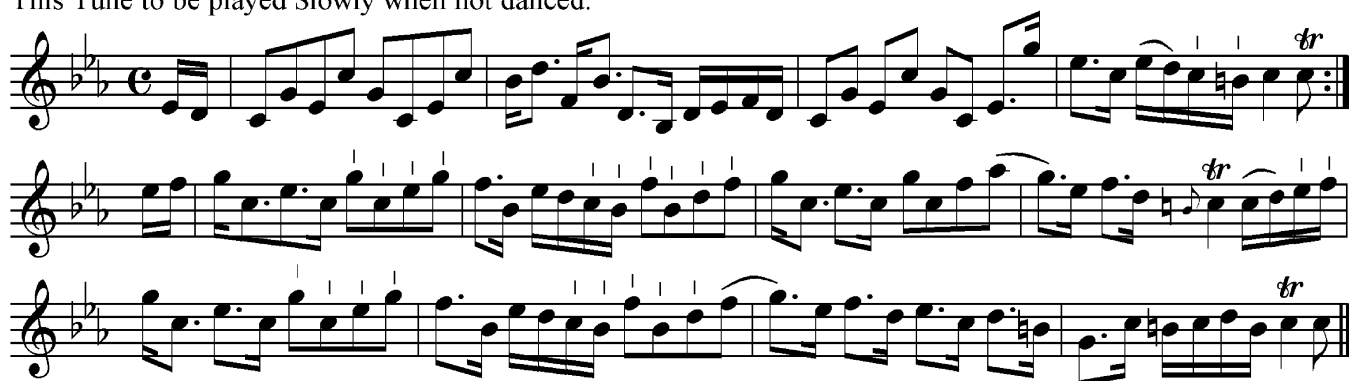
on being deprived of his Favorite Beverage.

General MacDonald's Reel.



General MacDonald's Strathspey.

This Tune to be played Slowly when not danced.



General Wemyss of Wemyss.

Slowly

Musical score for 'General Wemyss of Wemyss' in C major, 3/4 time. The piece is marked 'Slowly'. It consists of three staves of music. The first staff begins with a treble clef and a common time signature. The melody features a series of eighth and sixteenth notes, with several trills marked 'tr'. The second and third staves provide accompaniment with similar rhythmic patterns and trills. The piece concludes with a double bar line and repeat dots.

Hilton Lodge. a Strathspey.

Musical score for 'Hilton Lodge. a Strathspey.' in C major, 3/4 time. The piece consists of three staves of music. The first staff begins with a treble clef and a common time signature. The melody is characterized by a steady eighth-note pattern with several trills marked 'tr'. The second and third staves provide accompaniment with similar rhythmic patterns and trills. The piece concludes with a double bar line and repeat dots.

Hon. George Baillie's Strathspey.

Slowish

Musical score for 'Hon. George Baillie's Strathspey.' in C major, 3/4 time. The piece is marked 'Slowish'. It consists of three staves of music. The first staff begins with a treble clef and a common time signature. The melody features a series of eighth and sixteenth notes, with several trills marked 'tr'. The second and third staves provide accompaniment with similar rhythmic patterns and trills. The piece concludes with a double bar line and repeat dots.

Hon. Mr. Ramsay Maule's Strathspey.

Slowly

Musical score for Hon. Mr. Ramsay Maule's Strathspey. The score is written for three staves in treble clef, with a key signature of one sharp (F#) and a common time signature (C). The tempo is marked "Slowly". The music features a series of eighth-note patterns with frequent trills (tr) and slurs. The first staff begins with a trill on the first note. The second and third staves provide accompaniment with similar rhythmic patterns. The piece concludes with a double bar line.

Lady Amelia Murray's Strathspey.

Musical score for Lady Amelia Murray's Strathspey. The score is written for three staves in treble clef, with a key signature of one sharp (F#) and a common time signature (C). The music features a series of eighth-note patterns with frequent trills (tr) and slurs. The first staff begins with a trill on the first note. The second and third staves provide accompaniment with similar rhythmic patterns. The piece concludes with a double bar line.

Lady Ann Hope's Favorite.

Slow

Musical score for Lady Ann Hope's Favorite. The score is written for three staves in treble clef, with a key signature of one sharp (F#) and a common time signature (C). The tempo is marked "Slow". The music features a series of eighth-note patterns with frequent trills (tr) and slurs. The first staff begins with a trill on the first note. The second and third staves provide accompaniment with similar rhythmic patterns. The piece concludes with a double bar line.

Lady Charlotte Murray's (NOW DRUMMOND) Favorite.

Slowly

Musical score for "Lady Charlotte Murray's (NOW DRUMMOND) Favorite." The piece is in 6/8 time and D major. It consists of six staves of music. The first staff begins with a treble clef, a key signature of two sharps (D major), and a 6/8 time signature. The melody is marked with a trill (tr) over the first note. The piece concludes with a double bar line and repeat dots.

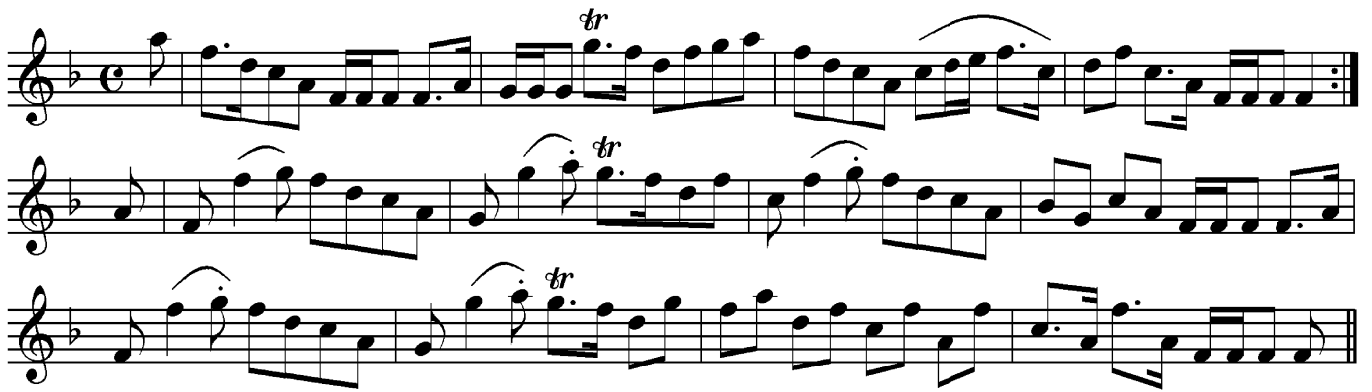
Lady Grace Douglass's Reel.

Musical score for "Lady Grace Douglass's Reel." The piece is in 2/4 time and B-flat major. It consists of three staves of music. The first staff begins with a treble clef, a key signature of two flats (B-flat major), and a 2/4 time signature. The melody is marked with a fermata over the first note. The piece concludes with a double bar line and repeat dots.

Lady Jean Montgomrie's Strathspey.

Musical score for "Lady Jean Montgomrie's Strathspey." The piece is in 2/4 time and B-flat major. It consists of three staves of music. The first staff begins with a treble clef, a key signature of two flats (B-flat major), and a 2/4 time signature. The melody is marked with a fermata over the first note and contains several trills (tr) throughout. The piece concludes with a double bar line and repeat dots.

Lady Lucy Lesslie Melville's Reel.



Musical score for "Lady Lucy Lesslie Melville's Reel." The score is written in treble clef, 2/4 time, and B-flat major. It consists of three staves. The first staff begins with a treble clef, a B-flat key signature, and a 2/4 time signature. The melody is characterized by eighth-note patterns and includes trills (tr) and slurs. The second and third staves continue the melody with similar rhythmic and melodic motifs.



Lady Muir McKenzie's Favorite.

Slow



Musical score for "Lady Muir McKenzie's Favorite." The score is written in treble clef, 2/4 time, and D major. It consists of six staves. The tempo is marked "Slow". The melody is characterized by eighth-note patterns and includes trills (tr) and slurs. The score begins with a treble clef, a D major key signature, and a 2/4 time signature. The melody is characterized by eighth-note patterns and includes trills (tr) and slurs. The score ends with a double bar line and repeat dots.

Lawer's House. a Scottish Measure.

Slowly

Musical score for 'Lawer's House. a Scottish Measure.' consisting of six staves of music in treble clef, 6/8 time. The score includes various musical notations such as slurs, trills (tr), and repeat signs.



Loch Erroch Side. a Strathspey.

Slow with much Expression.

Composed by Niel Gow & his 2nd Wife.

Musical score for 'Loch Erroch Side. a Strathspey.' consisting of four staves of music in treble clef, 6/8 time. The score includes various musical notations such as slurs, trills (tr), and repeat signs.

Lord Airley's Reel.

Musical score for Lord Airley's Reel, featuring three staves of music in G minor. The first staff includes a trill (tr) marking. The piece concludes with a double bar line and repeat dots.

Lord Blantyre's Strathspey.

Musical score for Lord Blantyre's Strathspey, featuring three staves of music in D major. The piece concludes with a double bar line and repeat dots.

Lord Charles Murray's Strathspey.

Musical score for Lord Charles Murray's Strathspey, featuring four staves of music in G minor. The third staff includes a trill (tr) marking. The piece concludes with a double bar line and repeat dots.

Lord James Murrays Reel.

Musical score for Lord James Murrays Reel, featuring three staves of treble clef notation in G major and common time. The melody is characterized by a mix of eighth and sixteenth notes, with a trill in the first measure of the first staff.

Major Graham of Inchbrakie. a Strathspey.

Slow

Musical score for Major Graham of Inchbrakie, featuring three staves of treble clef notation in G major and common time, marked "Slow". The score includes trills (tr) and slurs throughout the piece.

Marquis of Tullibardine. Jig.

Slowish

Musical score for Marquis of Tullibardine, featuring four staves of treble clef notation in G minor and 9/8 time, marked "Slowish". The score includes slurs and a variety of note values typical of a jig.

Master Erskine's Hornpipe.

Musical score for Master Erskine's Hornpipe, consisting of four staves of music in C major and 2/4 time. The melody is characterized by eighth-note patterns and slurs. The piece concludes with a double bar line and repeat dots.

Miss Colston's Strathspey.

Musical score for Miss Colston's Strathspey, consisting of three staves of music in B-flat major and 2/4 time. The melody features sixteenth-note runs and trills, indicated by 'tr' markings. The piece concludes with a double bar line and repeat dots.

Miss Drummond of Perth's Strathspey.

Musical score for Miss Drummond of Perth's Strathspey, consisting of three staves of music in C major and 2/4 time. The melody is highly rhythmic, featuring sixteenth-note patterns and trills, indicated by 'tr' markings. The piece concludes with a double bar line and repeat dots.

Miss Farquharson of Invercauld's Srathspey.

Musical score for Miss Farquharson of Invercauld's Srathspey. The piece is in G minor (one flat) and 2/4 time. It consists of four staves of music. The melody is characterized by a series of eighth-note runs and slurs, typical of the Srathspey style. The piece concludes with a double bar line.

Miss Johnston of Hilton's Srathspey.

Slowly

Musical score for Miss Johnston of Hilton's Srathspey. The piece is in G minor (one flat) and 2/4 time. It consists of three staves of music. The tempo is marked 'Slowly'. The melody features several trills, indicated by 'tr' above the notes. The piece concludes with a double bar line.

Miss Margaret Graham of Inchbrakie.

Slowly

Musical score for Miss Margaret Graham of Inchbrakie. The piece is in G minor (one flat) and 2/4 time. It consists of three staves of music. The tempo is marked 'Slowly'. The melody features several trills, indicated by 'tr' above the notes. The piece concludes with a double bar line.

Miss Muir McKenzie's Strathspey.

Musical score for Miss Muir McKenzie's Strathspey, consisting of four staves of music in treble clef, 2/4 time, and A major key. The score features a complex rhythmic pattern with many eighth and sixteenth notes. Trills (tr) are indicated above several notes throughout the piece.

Miss Ross's Strathspey.

Slow

Musical score for Miss Ross's Strathspey, consisting of three staves of music in treble clef, 2/4 time, and B-flat major key. The tempo is marked "Slow". The score features a complex rhythmic pattern with many eighth and sixteenth notes. Trills (tr) are indicated above several notes throughout the piece.

Miss Stewart of Grantully's Reel.

Musical score for Miss Stewart of Grantully's Reel, consisting of three staves of music in treble clef, 2/4 time, and A major key. The score features a complex rhythmic pattern with many eighth and sixteenth notes.

Miss Stewart of Grantully's Strathspey.

Musical score for Miss Stewart of Grantully's Strathspey. The score is written in treble clef with a key signature of two sharps (F# and C#) and a common time signature (C). It consists of three staves. The first staff contains the melody, featuring several trills marked with 'tr'. The second and third staves provide accompaniment with rhythmic patterns of eighth and sixteenth notes.

Mr. Graham of Orchill's Strathspey.

Musical score for Mr. Graham of Orchill's Strathspey. The score is written in treble clef with a key signature of one flat (Bb) and a common time signature (C). It consists of three staves. The first staff contains the melody, featuring several trills marked with 'tr'. The second and third staves provide accompaniment with rhythmic patterns of eighth and sixteenth notes.

Mr. Menzies of Culdare's Reel.

Musical score for Mr. Menzies of Culdare's Reel. The score is written in treble clef with a key signature of two sharps (F# and C#) and a common time signature (C). It consists of three staves. The first staff contains the melody, featuring several trills marked with 'tr'. The second and third staves provide accompaniment with rhythmic patterns of eighth and sixteenth notes.

Mr. Moray of Abercarney's Strathspey.

Musical score for Mr. Moray of Abercarney's Strathspey, consisting of three staves. The key signature is one flat (B-flat) and the time signature is common time (C). The music features a series of eighth-note patterns with trills (tr) indicated above several notes.

Mr. Robertson of Lude's Strathspey.

Slowly

Musical score for Mr. Robertson of Lude's Strathspey, consisting of five staves. The key signature is two sharps (D major) and the time signature is common time (C). The music is marked "Slowly" and features a series of eighth-note patterns with trills (tr) indicated above several notes.

Mr. William Fraser's Favorite.

Slowly

by Nath. Gow.

by Niel and Nath. Gow.

Musical score for Mr. William Fraser's Favorite, consisting of three staves. The key signature is two sharps (D major) and the time signature is common time (C). The music is marked "Slowly" and features a series of eighth-note patterns. The first staff is attributed to Nath. Gow, and the second and third staves are attributed to Niel Gow.

Mrs. Baird of New Byth's Strathspey.

Slowish

Musical score for Mrs. Baird of New Byth's Strathspey. The score is written for three staves in treble clef, with a key signature of two sharps (F# and C#) and a common time signature (C). The tempo is marked 'Slowish'. The music features a mix of eighth and sixteenth notes, with some slurs and ties. The first staff begins with a quarter rest followed by a series of eighth notes. The second and third staves provide a harmonic accompaniment with similar rhythmic patterns.

Mrs. Carmichael of Skirling's Strathspey.

Slow

Musical score for Mrs. Carmichael of Skirling's Strathspey. The score is written for three staves in treble clef, with a key signature of two sharps (F# and C#) and a common time signature (C). The tempo is marked 'Slow'. The music is characterized by frequent trills, indicated by 'tr' markings above various notes. The first staff starts with a quarter rest followed by eighth notes. The second and third staves feature a steady accompaniment with trills and slurs.

Mrs. Chisholm of Chisholm's.

Musical score for Mrs. Chisholm of Chisholm's. The score is written for four staves in treble clef, with a key signature of three sharps (F#, C#, and G#) and a common time signature (C). The tempo is not explicitly marked but appears to be a moderate pace. The music is highly rhythmic, featuring many sixteenth and thirty-second notes. Trills are marked with 'tr' above several notes. The first staff begins with a quarter rest followed by a series of sixteenth notes. The subsequent staves provide a complex accompaniment with many trills and slurs.

Mrs. Donaldson.

Slowly

Musical score for Mrs. Donaldson, featuring three staves of music in G minor. The tempo is marked "Slowly". The score includes various trills (tr) and triplets (3) throughout the piece.

Mrs. Drummond of Logiealmonds Reel.

Musical score for Mrs. Drummond of Logiealmonds Reel, featuring three staves of music in G major. The score includes various trills (tr) and triplets (3) throughout the piece.

Mrs. Ferguson of Reath's Strathspey.

Slowish

Musical score for Mrs. Ferguson of Reath's Strathspey, featuring three staves of music in G minor. The tempo is marked "Slowish". The score is characterized by numerous trills (tr) throughout the piece.

Mrs. Fleming of Moness. a Strathspey.

Slowly

Musical score for Mrs. Fleming of Moness's Strathspey, consisting of four staves. The music is in 2/4 time and B-flat major. The first staff features a melody with trills (tr) and slurs. The second and fourth staves provide accompaniment with eighth-note patterns and slurs. The third staff continues the melody with trills and slurs. The piece concludes with a double bar line.

Mrs. Menzies of Culdare's Strathspey.

Slow

Musical score for Mrs. Menzies of Culdare's Strathspey, consisting of three staves. The music is in 2/4 time and B-flat major. The first staff features a melody with trills (tr) and slurs. The second and third staves provide accompaniment with eighth-note patterns and trills. The piece concludes with a double bar line.

Mrs. Moray of Abercarney's Strathspey.

Musical score for Mrs. Moray of Abercarney's Strathspey, consisting of three staves. The music is in 2/4 time and B-flat major. The first staff features a melody with trills (tr). The second and third staves provide accompaniment with eighth-note patterns and trills. The piece concludes with a double bar line.

Mrs. Wright of Laton.

Slowly

Musical score for Mrs. Wright of Laton, consisting of three staves of music in treble clef, key of D major, and common time. The first staff begins with a trill (tr) over the first note. The piece concludes with a double bar line and repeat dots.

Niel Gow's compliments returned to Mr. Marshall.

Slowly

Musical score for Niel Gow's compliments returned to Mr. Marshall, consisting of three staves of music in treble clef, key of D major, and common time. The score includes several trills (tr) and slurs throughout the piece.

Niel Gow's Lament for the Death of his 2nd Wife.

Slow & Pathetick

Musical score for Niel Gow's Lament for the Death of his 2nd Wife, consisting of six staves of music in treble clef, key of D major, and 6/8 time. The score is characterized by a slow and pathetick tempo, featuring numerous trills (tr), slurs, and fermatas.

Niel Gows Lamentation for James Moray of Abercarney.

Slow & Pathetic.



Musical score for Niel Gows Lamentation for James Moray of Abercarney. The score is written for three staves in G major (one sharp) and common time (C). The tempo is marked 'Slow & Pathetic'. The music features a mix of eighth and sixteenth notes, with some trills and slurs. The first staff begins with a treble clef and a key signature of one sharp. The second and third staves continue the melody and accompaniment. The piece concludes with a double bar line and repeat dots.



Niel Gow's Lamentation for the Death of his Brother Donald.*

Slow



Musical score for Niel Gow's Lamentation for the Death of his Brother Donald. The score is written for six staves in G major (one sharp) and 6/8 time. The tempo is marked 'Slow'. The music is characterized by frequent trills (tr) and slurs. The first staff begins with a treble clef and a key signature of one sharp. The second and third staves continue the melody and accompaniment. The piece concludes with a double bar line and repeat dots.

* Donald Gow was the favorite Bass, and it was only by the Solicitations of respected Patrons that Niel could be prevailed upon to perform after his Brother's Death.

Niel Gow's Recovery. a Strathspey.

Musical score for Niel Gow's Recovery, a Strathspey. The score is written in 2/4 time and features a key signature of one flat (B-flat major). It consists of three staves of music. The first staff contains the main melody with several trills (tr) and grace notes. The second and third staves provide accompaniment, with the second staff featuring a prominent bass line with a flat (b) and the third staff providing harmonic support with trills and grace notes.

Orchill Graham.

Slowly

Musical score for Orchill Graham. The score is written in 2/4 time and features a key signature of one flat (B-flat major). It consists of three staves of music. The tempo is marked 'Slowly'. The first staff contains the main melody with several trills (tr) and grace notes. The second and third staves provide accompaniment, with the second staff featuring a prominent bass line with a flat (b) and the third staff providing harmonic support with trills and grace notes.

Sir George Mackenzie's. Reel.

Musical score for Sir George Mackenzie's Reel. The score is written in 2/4 time and features a key signature of two sharps (D major). It consists of three staves of music. The first staff contains the main melody with several trills (tr) and grace notes. The second and third staves provide accompaniment, with the second staff featuring a prominent bass line with a sharp (#) and the third staff providing harmonic support with trills and grace notes.

Sir John Henderson.

Musical score for Sir John Henderson, consisting of three staves. The key signature is one sharp (F#) and the time signature is 6/8. The first staff features a melody with trills (tr) and a repeat sign at the end. The second and third staves provide accompaniment with rhythmic patterns.

Sir John McGregor Murray in the Celtic Chair.

Musical score for Sir John McGregor Murray in the Celtic Chair, consisting of five staves. The key signature is two sharps (F# and C#) and the time signature is common time (C). The first staff has a melody with a repeat sign. The remaining four staves are accompaniment.

Strathearn. a Strathspey.

Musical score for Strathearn. a Strathspey, consisting of three staves. The key signature is two flats (Bb and Eb) and the time signature is common time (C). The first staff features a melody with trills (tr) and a repeat sign. The second and third staves are accompaniment.

Susie Brodie. a Strathspey.

Musical score for 'Susie Brodie. a Strathspey.' consisting of three staves. The key signature is one sharp (F#) and the time signature is common time (C). The score features a variety of rhythmic patterns, including eighth and sixteenth notes, and rests. Trills (tr) are indicated above several notes. The piece concludes with a double bar line and repeat dots.



The Athole Volunteer's March

Pomposa

Musical score for 'The Athole Volunteer's March' consisting of six staves. The key signature is one flat (Bb) and the time signature is common time (C). The score features a variety of rhythmic patterns, including eighth and sixteenth notes, and rests. Trills (tr) are indicated above several notes. The piece concludes with a double bar line and repeat dots.

The Athole Volunteer's Quick Step.

A musical score for 'The Athole Volunteer's Quick Step' consisting of six staves of music. The key signature has one flat (B-flat) and the time signature is 6/8. The music features a mix of eighth and sixteenth notes, with various ornaments including trills (tr) and grace notes (s). The piece concludes with a double bar line.



The Brigg of Balater.

Very Slow

A musical score for 'The Brigg of Balater' consisting of three staves of music. The key signature has one flat (B-flat) and the time signature is common time (C). The music is characterized by a slow tempo and features a mix of eighth and sixteenth notes, with several trills (tr) and grace notes (s). The piece concludes with a double bar line.

The Countess of Eglintoun's Delight.

Slowish

Musical score for 'The Countess of Eglintoun's Delight'. The score is written in 6/8 time and B-flat major. It consists of six staves. The first staff begins with a treble clef, a key signature of one flat, and a 6/8 time signature. The music features a series of eighth and sixteenth notes, with several trills (tr) and slurs. The piece concludes with a double bar line.



The Duke of Gordon's Strathspey.

Slow

Musical score for 'The Duke of Gordon's Strathspey'. The score is written in 2/4 time and D major. It consists of three staves. The first staff begins with a treble clef, a key signature of two sharps, and a 2/4 time signature. The music features a series of eighth and sixteenth notes, with several trills (tr) and slurs. The piece concludes with a double bar line.

The Dunkeld Hermitage Bridge.

Slow

Musical score for 'The Dunkeld Hermitage Bridge' in G major, 6/8 time. The piece consists of five staves of music. The first staff begins with a treble clef, a key signature of one sharp (F#), and a 6/8 time signature. The melody is characterized by frequent trills (tr) and slurs. The second and third staves continue the melodic line with similar ornamentation. The fourth and fifth staves provide a second ending, with the first ending marked '1' and the second ending marked '2'. The piece concludes with a double bar line and repeat dots.

The Dutchess of Atholl's Slipper.

Slowly

Musical score for 'The Dutchess of Atholl's Slipper' in G major, common time (C). The piece consists of three staves of music. The first staff begins with a treble clef, a key signature of one sharp (F#), and a common time signature. The melody features a series of eighth notes with frequent trills (tr). The second and third staves continue the melodic line, maintaining the trill ornamentation throughout. The piece concludes with a double bar line and repeat dots.

The Dutchess of Atholl's Strathspey.

Slow

Musical score for 'The Dutchess of Atholl's Strathspey' in G major, common time (C). The piece consists of four staves of music. The first staff begins with a treble clef, a key signature of one sharp (F#), and a common time signature. The melody is characterized by frequent trills (tr) and slurs. The second and third staves continue the melodic line with similar ornamentation. The fourth staff provides a second ending, marked with a repeat sign and a trill. The piece concludes with a double bar line and repeat dots.

The Dutchess of Buccleugh's Strathspey.

Slowly

Musical score for 'The Dutchess of Buccleugh's Strathspey'. The score is written for three staves in treble clef, with a key signature of three sharps (F#, C#, G#) and a common time signature (C). The tempo is marked 'Slowly'. The music features a mix of eighth and sixteenth notes, with several trills (tr) and a fermata over a note in the third measure of the first staff. The piece concludes with a double bar line and repeat dots.

The Hon: John Lesslie Melville's Strathspey.

Musical score for 'The Hon: John Lesslie Melville's Strathspey'. The score is written for three staves in treble clef, with a key signature of one flat (Bb) and a common time signature (C). The music features a mix of eighth and sixteenth notes, with several trills (tr) and a fermata over a note in the third measure of the first staff. The piece concludes with a double bar line and repeat dots.

The Hon. Miss Drummond of Perth's Reel.

Musical score for 'The Hon. Miss Drummond of Perth's Reel'. The score is written for three staves in treble clef, with a key signature of three sharps (F#, C#, G#) and a common time signature (C). The music features a mix of eighth and sixteenth notes, with several trills (tr) and a fermata over a note in the third measure of the first staff. The piece concludes with a double bar line and repeat dots.

The Landlady of Inver Inn.

Slowly

Musical score for 'The Landlady of Inver Inn' in 2/4 time, key of B-flat major. The score consists of four staves. The first two staves are the melody and accompaniment. The third and fourth staves are variations of the melody, each featuring a trill (tr.) on the first note of the phrase. The piece concludes with a double bar line and repeat dots.

The Marquis of Huntlys Snuff Mill. or the Royal Gift.

Very Slow with Expression

Musical score for 'The Marquis of Huntlys Snuff Mill. or the Royal Gift.' in common time, key of B-flat major. The score consists of three staves. The first two staves are the melody and accompaniment. The third staff is a variation of the melody, featuring a trill (tr.) on the first note of the phrase. The piece concludes with a double bar line and repeat dots.

The Ready Penny. a Srathspey.

Slowish

Musical score for 'The Ready Penny. a Srathspey.' in common time, key of D major. The score consists of two staves. The first staff is the melody, and the second staff is the accompaniment. The piece features first and second endings, indicated by the numbers 1 and 2 above the notes. The piece concludes with a double bar line and repeat dots.

*Watson's Class

Slow

Musical score for 'Watson's Class' in G major, 6/8 time. The score consists of four staves. The first staff contains the melody with trills (tr) over the notes G4, A4, and B4. The second and third staves provide harmonic accompaniment with eighth-note patterns. The fourth staff continues the accompaniment with a trill (tr) over the note G4. The piece concludes with a double bar line.

*An eminent teacher in Perth



Wha can help it.

Slowly

Musical score for 'Wha can help it.' in G major, 6/8 time. The score consists of six staves. The first staff begins with a 6/8 time signature. The melody is simple and consists of eighth and quarter notes. The second staff ends with a double bar line. The third, fourth, and fifth staves provide harmonic accompaniment with eighth-note patterns. The sixth staff continues the accompaniment with trills (tr) over the notes G4 and A4. The piece concludes with a double bar line.

Whisky Welcome back again. a Strathspey

Musical score for 'Whisky Welcome back again. a Strathspey'. The score is written in treble clef with a key signature of one flat (B-flat) and a common time signature (C). It consists of three staves. The first staff contains the main melody with several trills (tr) marked above notes. The second and third staves provide accompaniment, featuring a steady eighth-note pattern with some grace notes and trills.

Alluding to permitting Whisky to be distilled in the year 1801 it is a merry dancing Tune.

Yester House. a Reel.

Musical score for 'Yester House. a Reel.'. The score is written in treble clef with a key signature of three sharps (F#, C#, G#) and a common time signature (C). It consists of three staves. The first staff contains the main melody with several trills (tr) marked above notes. The second and third staves provide accompaniment, featuring a steady eighth-note pattern with some grace notes and trills.



Index

Niel Gow – Introduction	1	Mr Moray of Abercarney's Strathspey	19
Abercairney House	3	Mr Robertson of Lude's Strathspey	19
Cheap Mutton	3	Mr William Fraser's Favorite	19
Colonel David Stewart of Garth's Reel	4	Mrs Baird of New Byth's Strathspey	20
Colonel Robertson of Strewan's Welcome Home	3	Mrs Carmichael of Skirling's Strathspey	20
Colonel Robertson's Strathspey	4	Mrs Chisholm of Chisolm's	20
Countess of Hadinton's Strathspey	4	Mrs Donaldson	21
Dunkeld Bridge a Reel	5	Mrs Drummond of Logiealmond's Reel	21
Dunkeld Hermitage a Reel	5	Mrs Ferguson of Reith's Strathspey	21
Dunkeld House a Jig	5	Mrs Fleming of Moness a Strathspey	22
Dunkeld Steeple a Hornpipe	6	Mrs Menzies of Culdare's Strathspey	22
Earl of Breadalbane's Hermitage a Reel	6	Mrs Morey of Abercarney's Strathspey	22
Earl of Dalhousie's March	6	Mrs Wright of Laton	23
Farewell to Whisky	7	Niel Gow's compliments returned to Mr Marshall	23
General MacDonald's Reel	7	Niel Gow's Lament for the Death of his 2nd Wife	23
General MacDonald's Strathspey	7	Niel Gow's Lamentation for James Morey of Abercarney	24
General Wemyss of Wemyss	8	Niel Gow's Lamentation for the Death of his Brother Donald	24
Hilton Lodge a Strathspey	8	Niel Gow's Recovery a Strathspey	25
Honourable George Baillie's Strathspey	8	Orchill Graham	25
Honourable Mr Ramsay Maule's Strathspey	9	Sir George Mackenzie's a Reel	25
Lady Amelia Murray's Strathspey	9	Sir John Henderson	26
Lady Ann Hope's Favorite	9	Sir John McGregor Murray in the Celtic Chair	26
Lady Charlotte Murray's (Now Drummond) Favorite	10	Strathearn a Strathspey	26
Lady Grace Douglass's Reel	10	Susie Brodie a Strathspey	27
Lady Jean Montgomerie's Strathspey	10	The Athole Volunteer's March	27
Lady Lucy Leslie Melville's Reel	11	The Athole Volunteer's Quick Step	28
Lady Muir McKenzie's Favorite	11	The Brigg of Balater	28
Lawers House a Scottish Measure	12	The Countess of Eglintoun's Delight	29
Loch Errochside a Strathspey	12	The Duke of Gordon's Strathspey	29
Lord Airley's Reel	13	The Dunkeld Hermitage Bridge	30
Lord Blantyre's Strathspey	13	The Dutchess of Atholl's Slipper	30
Lord Charles Murray's Strathspey	13	The Dutchess of Atholl's Strathspey	30
Lord James Murray's Reel	14	The Dutchess of Buccleugh's Strathspey	31
Major Graham of Inchbrakie a Strathspey	14	The Honourable John Leslie Melville's Strathspey	31
Marquis of Tullibardine Jig	14	The Hon. Miss Drummond of Perth's Reel	31
Master Erskine's Hornpipe	15	The Landlady of Inver Inn	32
Miss Colston's Strathspey	15	The Marquis of Huntley's Snuff Mill or the Royal Gift	32
Miss Drummond of Perth's Strathspey	15	The Ready Penny a Strathspey	32
Miss Farquharson of Invercauld's Strathspey	16	Watson's Class	33
Miss Johnston of Hilton's Strathspey	16	Wha can help it	33
Miss Margaret Graham of Inchbrakie	16	Whisky Welcome back again a Strathspey	34
Miss Muir McKenzie's Strathspey	17	Yester House a Reel	34
Miss Ross's Strathspey	17		
Miss Stewart of Grandtully's Reel	17		
Miss Stewart of Grandtully's Strathspey	18		
Mr Graham of Orchill's Strathspey	18		
Mr Menzies of Culdare's Reel	18		